



EVAPORATORS

141 Series

Cool Only, Floor, Under Dash or Ceiling Mount

EVAPORATORS

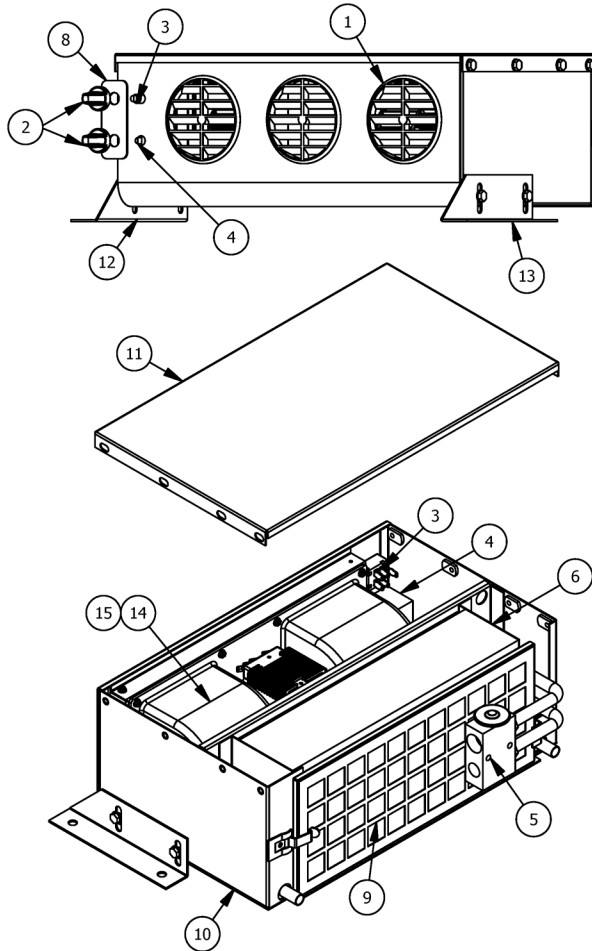


FEATURES

- Available 12 or 24 Volt
- Three Speed Blower Motor
- Adjustable Thermostat
- 3 – 3.5" Directional Louvers
- Removable, Washable Filter
- Steel Case with Black Powder Coat Finish

OPTIONS

- Floor Mount Bracket P/N 14-10100

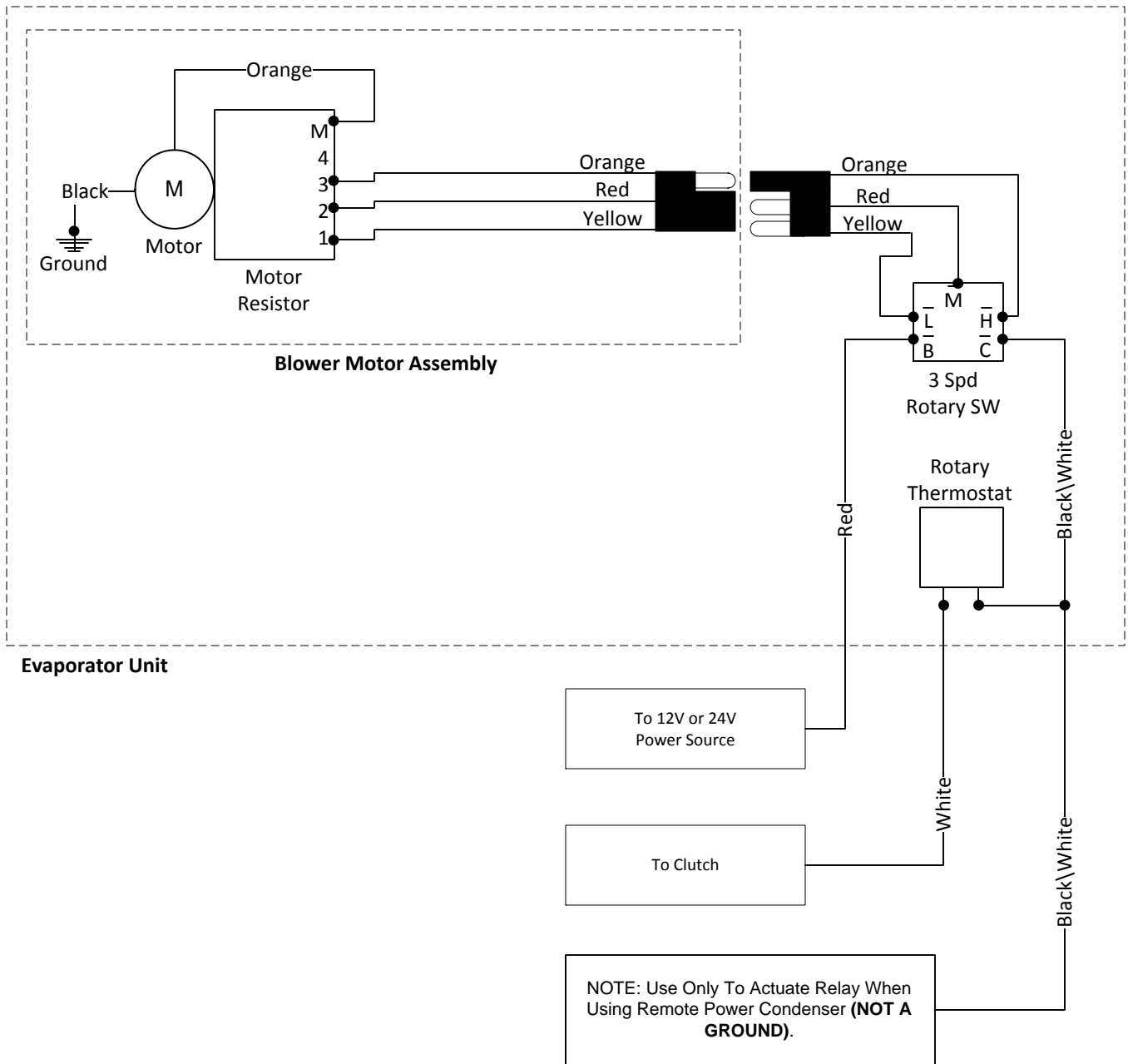


141 PARTS LIST

ITEM	QTY 12V	QTY 24V	DTAC NO.	DESCRIPTION	NOTE
1	3	3	02-16061	3-1/2" Louver	
2	2	2	03-00165	Knob	
3	1	1	03-13006	Rotary 3-Speed Switch	
4	1	1	03-14002	Rotary Thermostat	
5	1	1	04-15004	Block Expansion Valve	
6	1	1	07-00141	Evaporator Coil	
7	1	1	12-00026	Wire Harness	1
8	1	1	12-50419	Faceplate	
9	1	1	14-10000	141 Intake Filter	
10	1	1	14-10001A	Bottom Housing Rev	
11	1	1	14-10002	Lid	
12	1	1	14-10003	Mounting Brkt, Right	
13	1	1	14-10005	Mounting Brkt, Left	
14	1	0	30-51580	12V Blower Assembly	
15	0	1	30-51581	24V Blower Assembly	
16			NOTE 1	Not Shown	

BTU'S COOL	AIR FLOW	HEIGHT	WIDTH	DEPTH	WEIGHT	MOTOR	CURRENT DRAW	DTAC NO.
20,000	295 CFM	6.5"	17.25"	9.75"	24 LBS	1-12V	13 AMPS @ 13.5 VDC	141-12A
"	"	"	"	"	"	1-24V	8 AMPS @ 27.VDC	141-24A

141 & 144 Series Wire Diagram



Manufacturer of Heavy Equipment Heat/Cool Systems
 5130 Edgefield Ln, TX 76065 USA
 Phone 1-800-527-9477 Fax 1-800-299-5972
 www.dtac.com

12-00026
 07.27.09



PREVENTATIVE MAINTENANCE

DTAC strives to manufacture A/C systems of superior quality. However, as with all mechanical equipment, normal maintenance must be performed for your A/C to function at peak capacity. A well-maintained A/C system will save on down time and premature component failures.

Weekly inspections or every 2 days in severe environments should include:

1. Inspect compressor clutch drive belts (tightness, wear).
2. Inspect compressor mounting brackets (bolts, alignment).
3. Inspect mounting hardware on evaporator unit and condensers.
4. Inspect air intake filter. (Clean or replace filter).
5. Inspect evaporator and condenser coils. (Clean using air pressure. **DO NOT USE WATER OR PRESSURE WASHERS**).
6. Inspect hose and wire harness for proper routing, leaks and wear.

Helpful Hints

Make sure the evaporator air intake area is not obstructed (i.e. toolboxes, clothing, lunch box, etc.).

Manual thermostats on our systems, when rotated clockwise to the stop position will not allow the A/C compressor clutch to cycle. The compressor will run continuously and the evaporator coil will not defrost. **REMEDY:** Turn the manual thermostat knob clockwise to the stop position, then turn the thermostat knob back counter clockwise $\frac{1}{4}$ turn.

DTAC thanks you for purchasing our units. It is our endeavor to provide you with a quality A/C unit with trouble free service.